

## BODY FAT ANALYZER WITH CARRYING CASE

### • 27322 GIMA BODY FAT ANALYZER

Ideal for dieticians, gymnasias and sports centres, it is perfect also for homecare. It helps manage nutrition, fitness and weight control and can indicate if you are at the right weight and also whether you are nutritionally healthy. Advanced technology in your hands.

GIMA Body Fat Analyzer measures the flow of electrical signals (total body electrical resistance or impedance) as they pass through FAT, LEAN (muscle, bones, vital organs) or WATER. When the amount of fat, lean or water changes, so does the Body Fat signal, giving you a highly reliable and accurate measure of the amount of each of these components that make up your total weight. Specifically, 4 electrodes are placed over metacarpus and metatarsus where a 50 kHz current is introduced. The detected signal level will be an index of total body water and fat free mass.

#### Only 2 minutes for an essential and easy test

Testing and results take less than two minutes and have the same accuracy as other more expensive devices.

#### A lot of meaningful data

**FAT:** actual weight of fat on the body

**LEAN:** actual weight of lean, mostly muscle and vital organs

**WATER:** water content in the body

**% FAT:** percentage of fat weight in total body weight

**% LEAN:** percentage of lean weight in total body weight

**BMR:** basal metabolic rate

**Target Weight:** weight goal under optimal condition

**Target % Fat:** normal percent for sex and age

**Portable, for performing test everywhere**

Small size and light weight for portability.

**Body Fat Analyzer helps get and stay fit.**

It helps maximize personal level of fitness if you want to lose weight, build muscle, tone and trim, or simply be sure you are maintaining your current level of fitness:

- enables you to check effectiveness of weight loss programme, telling exactly where your weight loss is coming from (fat-lean-water)
- it helps monitoring improvements in muscle mass as a result



of exercise and/or diet  
- establishes a baseline for your body composition, so that nutritional and fitness improvements can be regularly monitored. **Frequent calibration** (code 27324 calibration kit) is necessary for accurate results in the time.

Supplied with a carrying case, kit of 2 sensor cables, sensor pads (box of 20), 2x9 V batteries, transformer and manual (GB, IT, FR, ES).

- 27321 SPARE SENSOR CABLES (kit of two)
- 27323 SENSOR PADS (box of 20) - replacement
- 32205 9V ALKALINE BATTERY
- 27324 CALIBRATION KIT

#### TECHNICAL SPECIFICATIONS

Size: 66x176x208 mm      Weight: 1,500 g (unit, battery and probe)  
Test frequency: approx. 50 kHz      Test current: less than 1mA  
Power source: two 9 Volt DC batteries or 230 V (by transformer)

## FITNESS SCALE

### • 27286 SOEHNLE 7850 FITNESS SCALE

Fitness scale for measurement of muscle, fat and water components, BMI and caloric needs per day  
- impedance measurement through hands, no need to take off the shoes

- simple self-explanatory menu guide on the glass surface

- no limit on measurement for over- and underweight people

- clothing weight value seasonally adjustable

- print-out of data/time, weight, data analysis and recommendations for nutrition and fitness activities

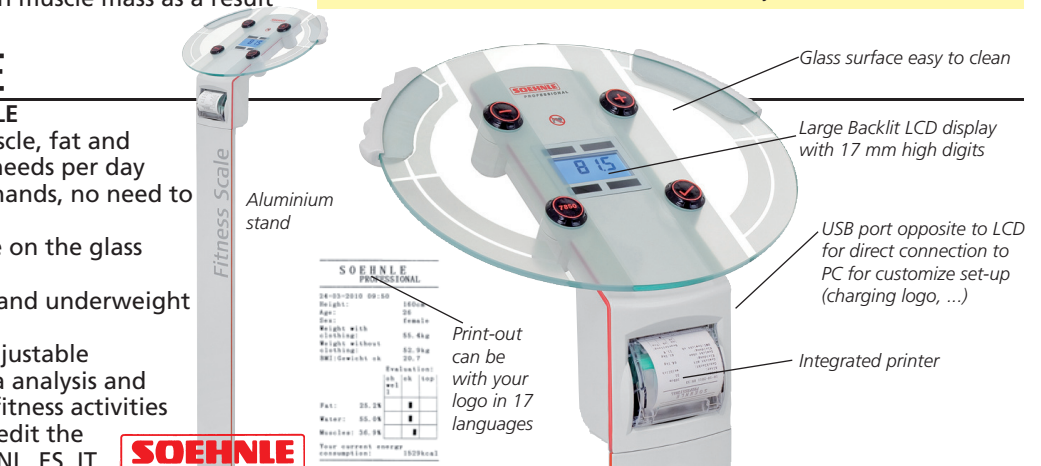
- CD-Rom with software included to edit the print-out and settings in DE, GB, FR, NL, ES, IT, HU, CZ, FI, SE, NO, DK, GR, PL, SI, RU, TR.

- kg/lbs/st selection function

Manual in: GB, FR, IT, DE, CZ.

- 33250 PAPER ROLL 57mm x 25m - box of 5

Extra large weighing platform



Glass surface easy to clean

Large Backlit LCD display with 17 mm high digits

USB port opposite to LCD for direct connection to PC for customize set-up (charging logo, ...)

Integrated printer

Print-out can be with your logo in 17 languages

#### TECHNICAL SPECIFICATIONS

Capacity: 180 kg  
Sensitivity: 100 g / 0.2 lb  
Size - weight: 365x490xh 1,290 mm - 15.8 kg  
Platform size: 365x480xh 45 mm  
Power supply: 100-240 V, 50/60 Hz

## BODY FAT SCALES

### • 27088 LIBRA BODY FAT SCALE - white

### • 27089 LIBRA BODY FAT SCALE - black

Multi function scales, for measuring body fat, water, muscle and bone mass. Supplied in a 4 colour box with multilanguage manual (GB, FR, IT, ES, PT, PL)

- equipped with 4 precision G sensors

- 8 user memories

- auto off in 30 seconds

- auto-on function

- 3 touch buttons for easier usage

#### TECHNICAL SPECIFICATIONS

Capacity: 150 kg / 330 lb - minimum 5 kg      LCD Size: 62.5x62 mm  
Sensitivity: 100 g / 0.2 lb      Batteries (included)  
Size: 310x310x18.8 mm      Switchable kg/lb/st



Weight and analysis of results shown on scale